

THAI NISHIMATSU CONSTRUCTION

WAREHOUSE & HIGH-RISE BLDG.
EXPERIENCE



THAI NISHIMATSU
60th Anniversary

INTRODUCTION.

Thai Nishimatsu Construction is committed to consistently providing building construction services with high quality of work, safety and environmental care under the slogan,

"On your side In your life"

COMPANY PROFILE

NISHIMATSU JAPAN COMPANY INFO

NISHIMATSU COMPANY INFO:

Company Name: Nishimatsu Construction Co., Ltd.
Location: Minato District, Tokyo, Japan
Establish Year: 1874
Registered Capital: THB 6.3 Billion (JYP 2351 Billion)
President: Mr. Takase Nobutoshi
No. of Employee: 2,762 persons
Scope of Service: General Contractor & Real Estate Development

PROJECT EXPERIENCE

JAPAN



NATIONAL MUSEUM OF
EMERGING
SCIENCE & INNOVATION

SINGAPORE



SINGAPORE NATIONAL
LIBRARY

HONG KONG



ALDRICH BAY
RESIDENTIAL BLDG.

THAILAND



HONDA CAR ASSEMBLY
PLANT

VIETNAM



PANASONIC THANG
LONG 2ND FACTORY

LAO



HOYA LAOS GLASS DISK
MANUFACTURING

HEAD QUARTER & BRANCH OFFICES

Nishimatsu Construction Co., Ltd. has been established in 1874 and has earned worldwide recognition as one of Japan's leading general contractors. Starting with headquarter in Tokyo, Japan, Nishimatsu has been actively operating a business in nine countries with three subsidiaries in Thailand, Vietnam, and Lao PDR, and five overseas branch offices in Myanmar, Philippines, Malaysia, Hong Kong, and Singapore.



COMPANY PROFILE

THAI NISHIMATSU COMPANY INFO

THAI NISHIMATSU COMPANY INFO:

Company Name: Thai Nishimatsu Construction Co., Ltd.
Address: 19th Floor, Sino-Thai Tower 32/48, Sukhumvit 21 Road (Soi Asoke) Wattana, Bangkok 10110
Registration Date: 17 September 1963
Registered Capital: THB 20,000,000
Managing Director: Mr. Eiichi Sakuma
No. of Employee: 175 persons
(Local 156, Japanese 17, Other 2 persons)
Scope of Service: General Contractor (Design & Build)
Affiliated Firms:
Lao Nishimatsu Construction Co., Ltd.
Thai Nishimatsu Construction - Myanmar Office
ISO Certificate:
ISO : 9001 : 2015, ISO : 14001 : 2015, ISO : 45001 : 2018

LOCATION



Company Registered No:
0105506002067

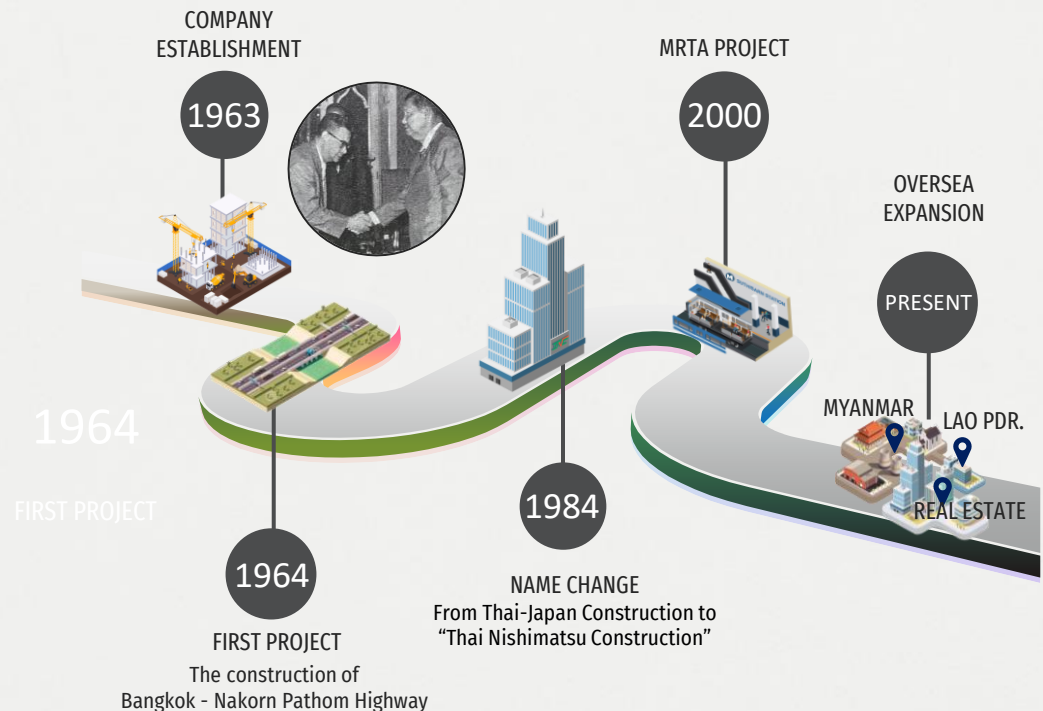


Certified by:
ISO 9001, 14001, 45001

COMPANY BACKGROUND

Thai Nishimatsu Construction Co., Ltd. was established in Thailand on September 17, 1963, previously named "Thai- Japan Construction", as an overseas subsidiary of Nishimatsu Construction Co., Ltd. Our Company is the first Japanese contractor to set up the business in Thailand. Our first project was the construction of Bangkok - Nakorn Pathom Highway, followed by many highway constructions, approximately 250 km in total. In 1984, We changed the name from "Thai- Japan Construction" to "Thai Nishimatsu Construction Co., Ltd.

In 1997, we were awarded the MRTA project, the construction of a subway structure. Nishimatsu Construction, our parent company, took part in the tunnel construction, while Thai Nishimatsu did the interior decoration (Suthisan - Thai Cultural Center Station). At present, our construction projects are mainly in factories and high-rise buildings for both Japanese and international clients. Recently, Thai Nishimatsu has established overseas branches in Myanmar and Laos to support foreign investment in SEA.



60 YEARS OF EXPERIENCE

CIVIL PROJECT

- 1963  Establishment Of Thai Japan Construction
- 1965  Bangkok – Nakorn Pathom Highway Construction
- 1970  Damnoensaduak Samutsongkram Highway
- 1984  Change the company name to Thai Nishimatsu Construction
- 1996  Bang Pakong Diversion Dam
- 1997  MRTA Project (Suthisan – Thailand Cultural Center Station)
- 2001  Industrial Ring Road (Bhumibol Bridge)
- 2003  Mitsubishi Coal Fire Power Plant
- 2010  Ajinomoto Landfill Work
- 2012  Rohm Integrated Systems Flood Protection Wall
- PRESENT

BUILDING PROJECT



MAJOR CLIENT

ARCHIVED PROJECTS



■ BUILDING ■ CIVIL

AUTOMOTIVE INDUSTRY

- HONDA AUTOMOBILE (THAILAND) CO., LTD.
- BRIDGESTONE TIRE MANUFACTURING (THAILAND) CO., LTD.
- BESTEX (THAILAND) CO., LTD.
- TOACS (THAILAND) CO., LTD.
- THAI MARUJUN CO., LTD.
- THAI KOITO CO., LTD.

ELECTRONICS INDUSTRY

- SEAGATE TECHNOLOGY (THAILAND) LTD.
- MITSUBISHI HEAVY INDUSTRIES – MAHAJAK AIR CONDITIONERS CO., LTD.
- ROHM INTEGRATED SYSTEMS (THAILAND) CO., LTD.
- HOYA LAOS CO., LTD.

FOOD & CONSUMER PRODUCT

- AJINOMOTO CO., (THAILAND) LTD.
- CP-MEJI CO., LTD.
- KAO INDUSTRIAL (THAILAND) CO., LTD.
- GOURMET PRIMO CO., LTD.

LOGISTICS INDUSTRY

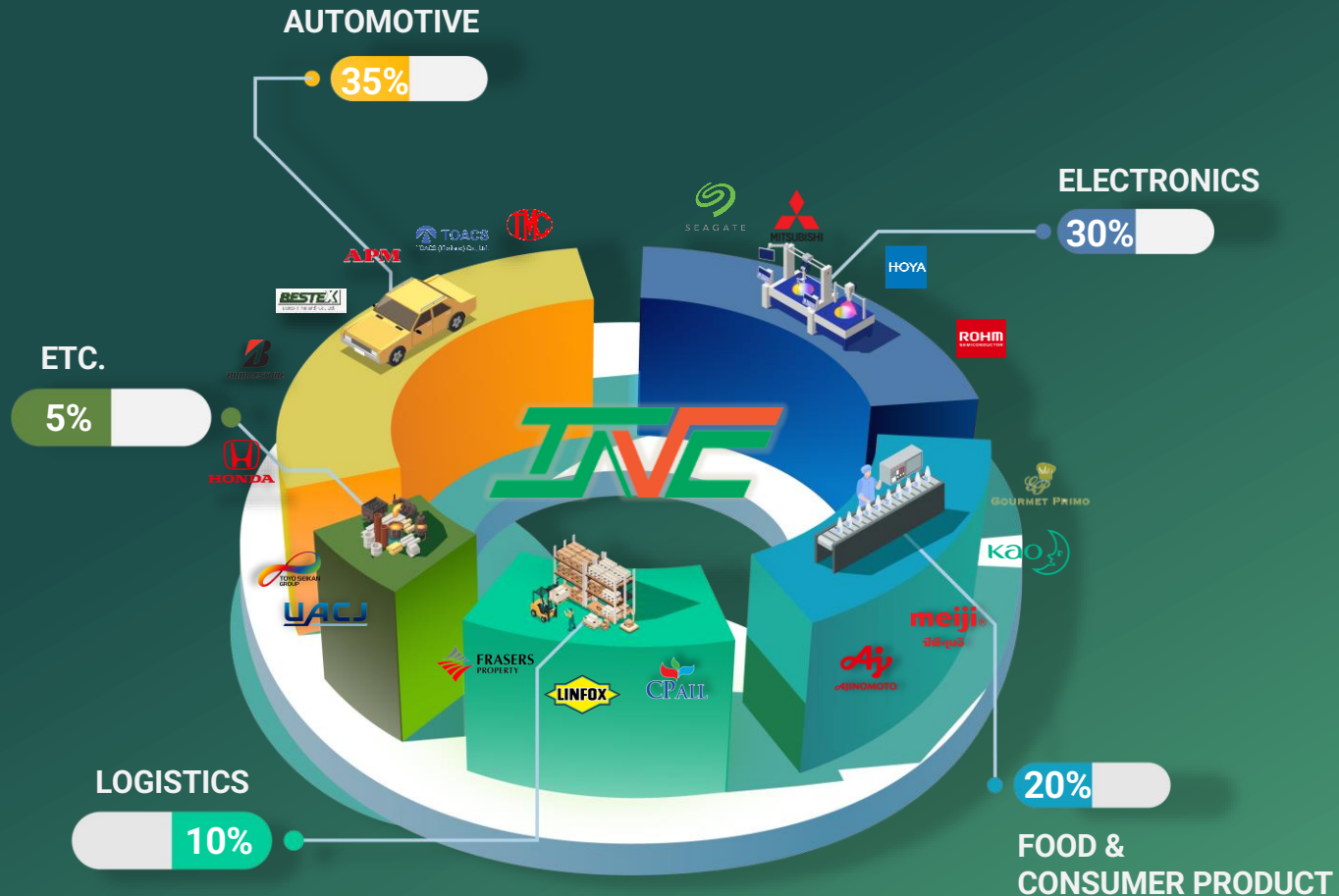
- CP-ALL PUBLIC CO., LTD.
- BRP LOGISTICS CO., LTD.
- LINFOX TRANSPORT (THAILAND) LTD.
- FRASERS PROPERTY INDUSTRIAL (THAILAND) CO., LTD.

OTHER INDUSTRY

- TOYO SEIKAN (THAILAND) CO., LTD.
- UACJ (THAILAND) CO., LTD.

MAJOR CLIENT PROPOTION

Thai Nishimatsu has comprehensive experience from heavy to light industries including automotive, electronics, food and consumer products, and recently expanded into the logistics industry.



SAFETY STANDARD

SAFETY ENVIRONMENTAL POLICY

1. BASIC PLANNING

To make the basic planning for safety control

3. METHOD STATEMENT

To make the method statement

2. PERSON IN CHARGE

To nominate person in charge of safety and To understand the worker

4. COLABORATIVE MEETING

To hold the meeting between TNC and sub-contractors.

5. REPORT & ADJUSTMENT

To report and adjust according to the situation

7. WORKER EDUCATION

To educate workers about jobsite before entering and working on site

9. LEADER CONFERENCE

To set up the conference for leader

6. SAFETY INSPECTION

To carry out the safety inspection by PM & safety manager

8. TOOL - BOX MEETING

To carry out tool-box meeting

10. NOTICE & INFORMATION

To deliver notice and safety information

11. SAFETY IMPLEMENTATION

To implement safety policy and practice

12. PATROL

To execute safety patrol between TNC and Nishimatsu (Parent Company)

SAFETY & ENVIRONMENTAL PATROL

Safety and Environmental Patrol will be carried out by TNC head office and Nishimatsu Construction from Japan, to inspect defections, correct the defective items, and set out the preventive plan to reduce error.



DAILY SAFETY CYCLE FLOW

1日の安全施工サイクル

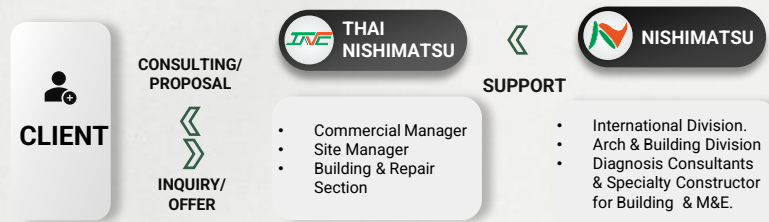


AFTER SALE SERVICE

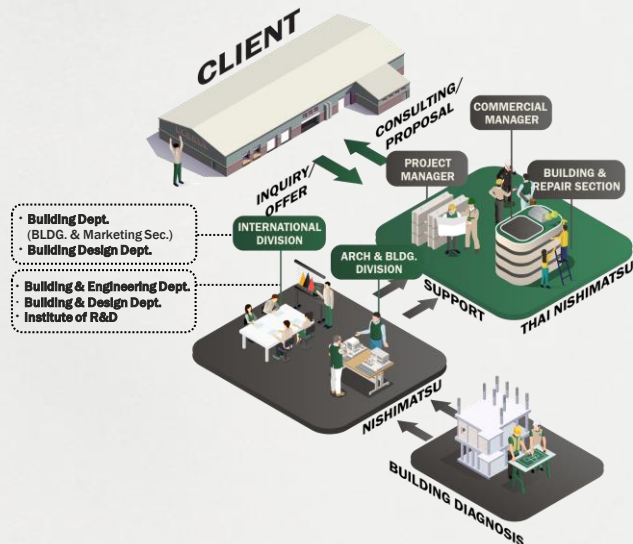
SPEEDY AND CONTINUOUS CARE FOR THE BUILDING

In response to client request, we offer "pair support program", the program that will pair up project manager and commercial manager with client factory to take care of the building after the handover. They will handle a maintenance request with support from both Thai Nishimatsu and Nishimatsu Construction Co., Ltd.

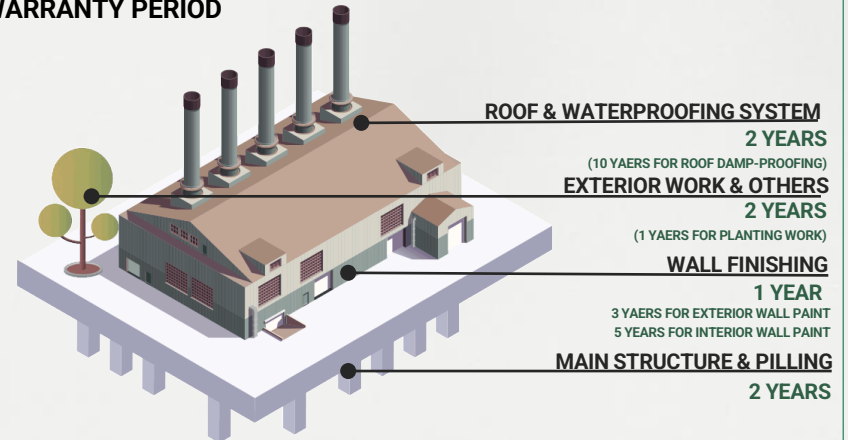
MAINTENANCE FLOW CHART



MAINTENANCE DIAGRAM



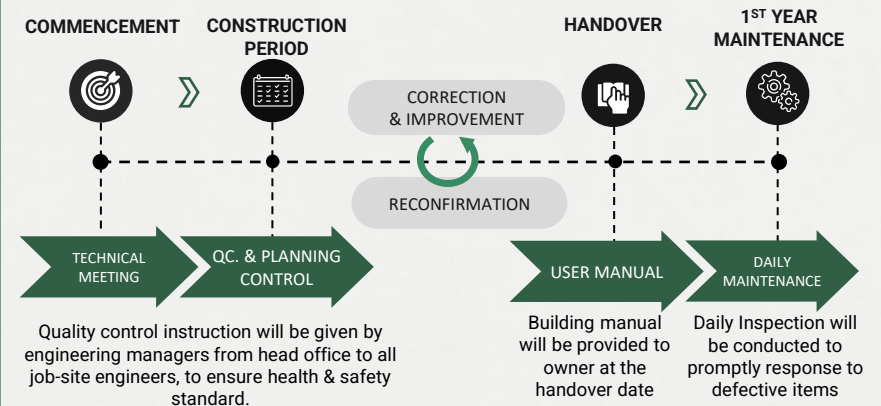
WARRANTY PERIOD



MAINTENANCE FLOWCHART

OFFERING LIFE-TIME MAINTENANCE & 1 STOP SERVICE FOR YOUR FACTORY

We commit to providing the maintenance instruction and defect warranty by carrying out daily, weekly, monthly, and annually inspections, and resolving any defect found during the 1st year after the completion.

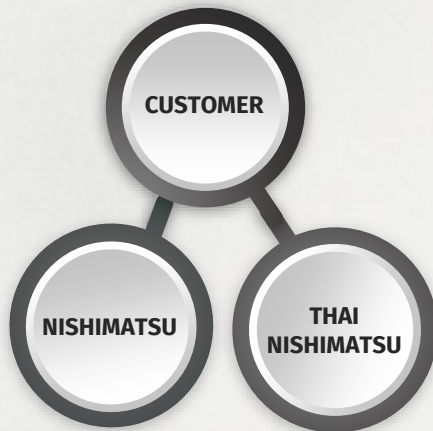


COMPANY PROFILE

ORGANIZATION CHART

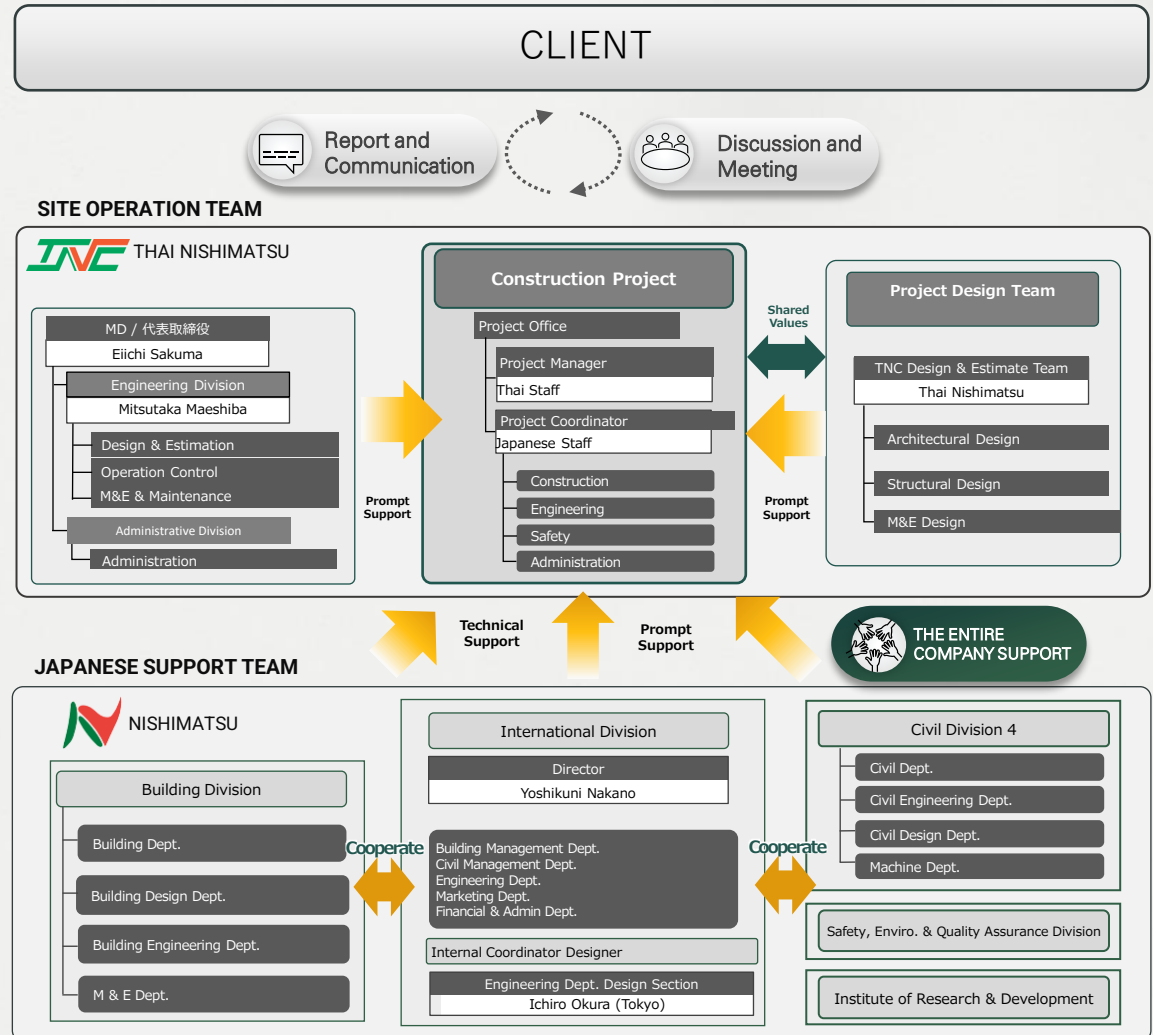
ROBUST TRINITY FOR THE PROJECT ACHIEVEMENT

"To build the best relationship with all concerned parties to solve problems and archive the project."



SUPPORTING SYSTEM FROM BOTH NISHIMATSU AND THAI NISHIMATSU

With technologies and extensive experiences of both Thai Nishimatsu and Nishimatsu Construction, this is our commitment to undertake the project with full dedication



PROJECT EXPERIENCE

IN HIGH-RISE BUILDING

1 Sathorn, BANGKOK



Bangkok Sathorn
Hotel
Management



2 Rama 9., BANGKOK



K.P.N. Tower Co.,
Ltd.

3 Vibhavadi Rangsit., BANGKOK



B&T REALTY Co.,
Ltd.

4 Patong., PHUKET



L.C. (THAILAND)
LIMITED

5 Sukhumvit 39, BANGKOK



SIAM AROON
PROPERTY

6 Sukhumvit 18, BANGKOK



ASIAN PROPERTY
(LADPRAO)

7 Sukhumvit 18, BANGKOK



PLAZA REMBRANDT

PROJECT EXPERIENCE IN HIGH-RISE BUILDING



BANGKOK SATHORN HOTEL MANAGEMENT CO., LTD.



GRAND NIKKO BANGKOK SATHORN HOTEL 405 KEYS HOTEL

CLIENT
BANGKOK SATHORN HOTEL MANAGEMENT CO., LTD.

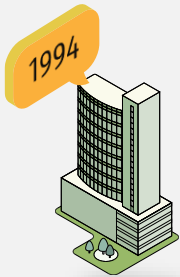
FUNCTION
34- STOREY HOTEL
(369 KEYS SHORT STAY + 36 KEYS LONG STAY)
GFA: 51,000 m²

LOCATION
SATHORN RD., BANGKOK

CONSTRUCTION PERIOD
MAY 2022 – MAY 2025 (35 MONTHS)

PROJECT EXPERIENCE IN OFFICE BUILDING

K.P.N. TOWER



CLIENT
K.P.N. TOWER CO., LTD.

FUNCTION
27 FLOORS (2 BASEMENTS)
GFA : 60,900 m²

LOCATION
RAMA 9, BANGKOK

CONSTRUCTION PERIOD
FEB 1994 - 1996

BETAGRO HQ. OFFICE



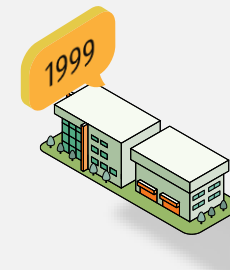
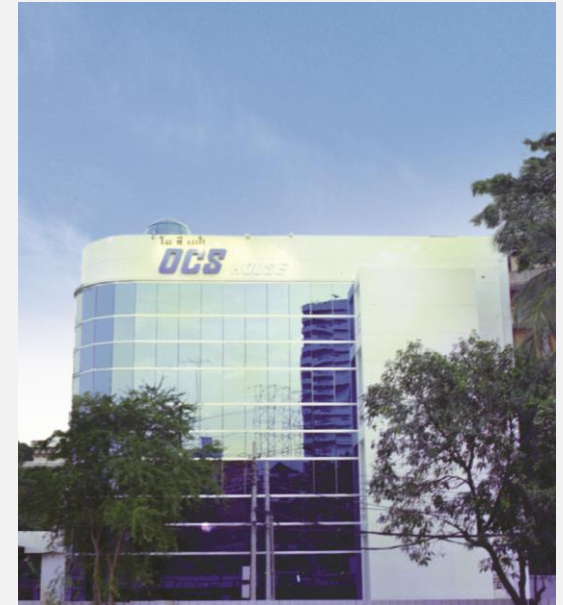
CLIENT
B&T REALTY CO., LTD.

FUNCTION
12 FLOORS (1 BASEMENT)
GFA : 19,763 m²

LOCATION
VIBHAVADI RANGSIT RD.,
BANGKOK

CONSTRUCTION PERIOD
APR 1994 - MAY 1995

O.C.S. GROUP OFFICE BLDG.



CLIENT
O.C.S. REAL ESTATE
CO., LTD.

FUNCTION
4 FLOORS
GFA : 1,339 m²

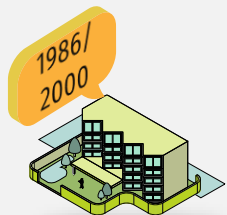
LOCATION
LADPRAO RD., BANGKOK

CONSTRUCTION PERIOD
JUN - NOV 1999

PROJECT EXPERIENCE

IN HOTEL & RESORT

HOLIDAY INN RESORT



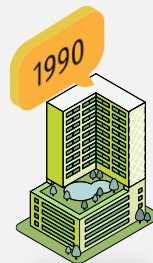
CLIENT
L.C. (THAILAND) LTD.

FUNCTION
6 FLOORS
GFA : 25,000 m²

LOCATION
PATONG, PHUKET

CONSTRUCTION PERIOD
JUN 1986 – JUNE 1987
OCT 2000 – NOV 2001

REMBRANDT PLAZA HOTEL



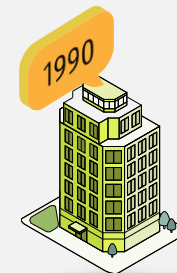
CLIENT
PLAZA REMBRANDT CO., LTD.

FUNCTION
27 FLOORS (1 BASEMENT)
GFA : 39,363 m²

LOCATION
SUKHUMVIT 18., BANGKOK

CONSTRUCTION PERIOD
MAY 1990 - DEC 1993

EVERGREEN INTERNATIONAL HOTEL



CLIENT
EVERGREEN INTERNATIONAL
HOTEL PROPERTY
(BANGKOK)
CO., LTD.

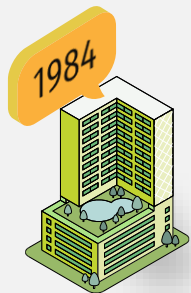
FUNCTION
14 FLOORS (1 BASEMENT)
GFA : 19,763 m²

LOCATION
SILOM RD., BANGKOK

CONSTRUCTION PERIOD
OCT 1990 - 1992

PROJECT EXPERIENCE IN RESIDENTIAL PROJECT

SHIVA HEIGHTS



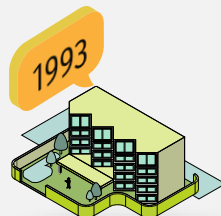
CLIENT
SHIVA HEIGHTS CO., LTD.

FUNCTION
34 FLOORS
GFA : 46,500 m²

LOCATION
SUKHUMVIT 20,
BANGKOK

CONSTRUCTION PERIOD
SEP 1991 – DEC 1994

S.C. SATHORN MANSION



CLIENT
B.P. PROPERTY CO., LTD.

FUNCTION
12 FLOORS (1 BASEMENT)
GFA : 12,094 m²

LOCATION
SATHORN RD., BANGKOK

CONSTRUCTION PERIOD
FEB 1993 - JUN 1994

WITTHAYU COMPLEX



CLIENT
V.K.J. CO., LTD.

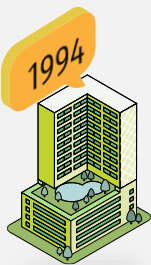
FUNCTION
TOWER A: 34 FLOORS
TOWER B: 38 FLOORS
GFA : 98,895 m²

LOCATION
NEW PETCHABURI RD.,
BANGKOK

CONSTRUCTION PERIOD
APR 1994 - JUN 1996

PROJECT EXPERIENCE IN RESIDENTIAL PROJECT

CITI RESORT SUKHUMVIT 39



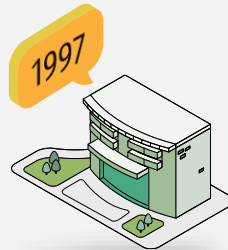
CLIENT
SIAM AROON PROPERTY
CO., LTD.

FUNCTION
14 FLOORS (2 BASEMENTS)
GFA : 29,230 m²

LOCATION
SUKHUMVIT 39., BANGKOK

CONSTRUCTION PERIOD
APR 1994 - JAN 1996

NAVIN COURT



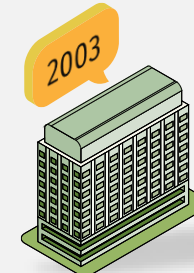
CLIENT
NAVIN COURT CO., LTD.

FUNCTION
8 STOREYS (1 BASEMENT)
GFA : 18,038 m²

LOCATION
SOI RUAM RUDEE.,
BANGKOK

CONSTRUCTION PERIOD
NOV 1997 - JAN 1999

CITI SMART CONDO SUKHUMVIT 18



CLIENT
ASIAN PROPERTY
(LADPRAO) CO., LTD.

FUNCTION
20 FLOORS
GFA : 35,000 m²

LOCATION
SUKHUMVIT 18, BANGKOK

CONSTRUCTION PERIOD
OCT 2003 – FEB 2005

NISHIMATSU EXPERIENCE IN HIGH-RISE BUILDING



SUMITOMO REAL ESTATE DEVELOPMENT CORPORATION



SUMITOMO FUDOSAN SHIBUYA TOWER

CLIENT

SUMITOMO REAL ESTATE DEVELOPMENT CO., LTD.

FUNCTION

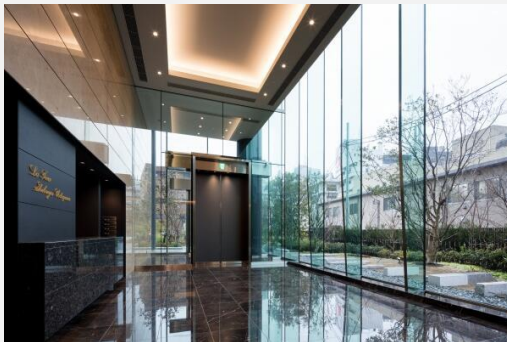
21 FLOORS CONDOMINIUM (2 BASEMENT)
GFA: 37,942 m²

LOCATION

SHIBUYA, TOKYO

YEAR OF COMPLETION

2019



NISHIMATSU PROJECT EXPERIENCE IN RESIDENTIAL BUILDING

BRANDS YOKOHAMA



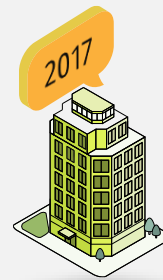
CLIENT
TOKYU LAND CORPORATION
TOSHIN LAND DEVELOPMENT

FUNCTION
17 FLOORS (1 BASEMENT)
GFA : 32,121 m²

LOCATION
YOKOHAMA, JAPAN

YEAR OF COMPLETION
2018

THE PARK HOUSE



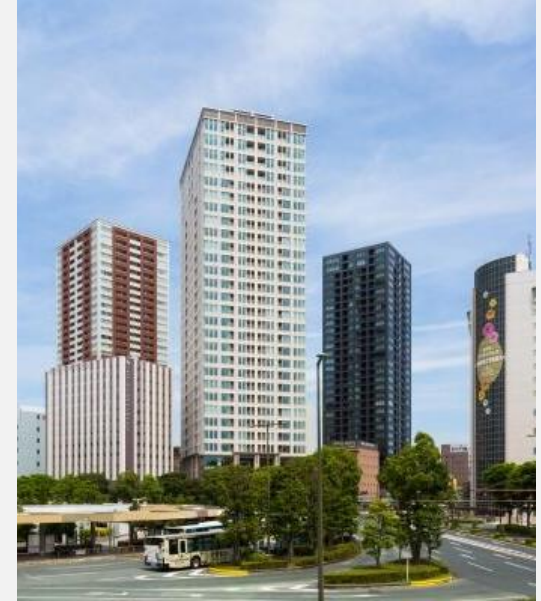
CLIENT
MITSUBISHI ESTATE
RESIDENCE CO., LTD.

FUNCTION
24 FLOORS (1 BASEMENT)
GFA : 19,763 m²

LOCATION
NAKANO, JAPAN

YEAR OF COMPLETION
2017

ICHIJO TOWER



CLIENT
ASAHI-ITAYA A-2
URBAN REDVELOPMENT

FUNCTION
30 FLOORS
GFA : 38,166 m²

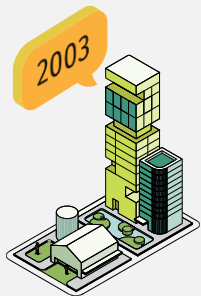
LOCATION
SHIZUOKA, JAPAN

YEAR OF COMPLETION
2020

NISHIMATSU PROJECT EXPERIENCE

IN OFFICE BUILDING

JIMBOCHO MITSUI BLDG.



CLIENT
JIMBOCHO 1-CHOME SOUTH
DISTRICT URBAN
REDEVELOPMENT

FUNCTION
29 FLOORS (3 BASEMENTS)
GFA : 137,374 m²

LOCATION
TOKYO, JAPAN

YEAR OF COMPLETION
2003

ROPPONGI TEA CUBE



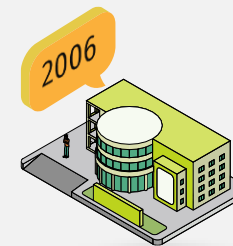
CLIENT
SAMSUNG JAPAN CORP.
& MITSUI FUDOSAN

FUNCTION
27 FLOORS (1 BASEMENT)
GFA : 61,807 m²

LOCATION
ROPPONGI, TOKYO

YEAR OF COMPLETION
2004

ANA NARITA SKY CENTER



CLIENT
NARITA INTERNATIONAL AIRPORT
CO., LTD.

FUNCTION
6 FLOORS
GFA : 21,979 m²

LOCATION
CHIBA, JAPAN

YEAR OF COMPLETION
2006

NISHIMATSU PROJECT EXPERIENCE

IN HOTEL & RESORT

PREMIER HOTEL CABIN



CLIENT
KEN CORPORATION

FUNCTION
13 FLOOR (1 BASEMENT)
GFA : 7,891 m²

LOCATION
OASAKA, JAPAN

YEAR OF COMPLETION
2017

SMILE HOTEL PREMIUM



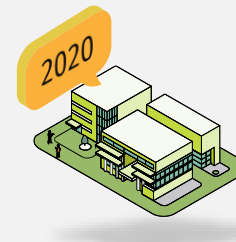
CLIENT
MITSUBISHI ESTATE
CORPORATION

FUNCTION
13 FLOOR (1 BASEMENT)
GFA : 6,327 m²

LOCATION
OSAKA, JAPAN

YEAR OF COMPLETION
2018

HOTEL VILLA FONTAINE GRAND HANEDA AIRPORT



CLIENT
HANEDA AIRPORT URBAN
DEVELOPMENT CO., LTD.

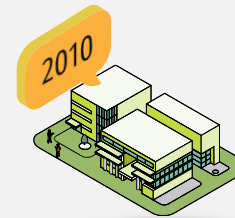
FUNCTION
12 FLOOR
GFA : 91,519 m²

LOCATION
TOKYO, JAPAN

YEAR OF COMPLETION
2020

NISHIMATSU PROJECT EXPERIENCE IN LOW-RISE RESIDENTIAL PROJECT

LA TOUR DAIKANYAMA



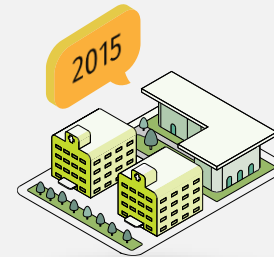
CLIENT
SUMITOMO REALTY &
DEVELOPMENT CO., LTD.

FUNCTION
6 FLOORS (2 BASEMENTS)
GFA : 49,954 m²

LOCATION
SHIBUYA-TOKYO, JAPAN

YEAR OF COMPLETION
2010

COCO TERRACE YOKOHAMA TOTSUKA HILLTOP EAST COURT



CLIENT
SUMITOMO REAL ESTATE
AND DAIWA REAL ESTATE

FUNCTION
7 FLOORS (2 BASEMENTS)
GFA : 10,879 m²

LOCATION
YOKOHAMA, JAPAN

YEAR OF COMPLETION
2015

THAI NISHIMATSU PROJECT EXPERIENCE

LARGE SCALE PROJECT

**CLIENT**

BRIDGESTONE TIRE MANUFACTURING
(THAILAND)
CO., LTD.

FUNCTION

PRODUCTION FACTORY FOR TRUCK TIRE PHASE
1 - 5
GFA : 290,293 m²

LOCATION

AMATA CITY, CHONBURI

CONSTRUCTION PERIOD

PHASE 1-2 106,031 m² : FEB 2003 – OCT 2004
PHASE 3 75,389 m² : NOV 2005 – OCT 2006
PHASE 4 71,516 m² : AUG 2011 – OCT 2012
PHASE 5: 37,357 m² : FEB 2022 – JUNE 2023

**CLIENT**

HONDA AUTOMOBILE (THAILAND) CO., LTD.

FUNCTION

CAR ASSEMBLY PLANT
GFA: 115,745 m²

LOCATION

ROJANA INDUSTRIAL PARK, PRACHINBURI

CONSTRUCTION PERIOD

OCT 2013 – JAN 2015

**CLIENT**

UACJ (THAILAND) CO., LTD.

FUNCTION

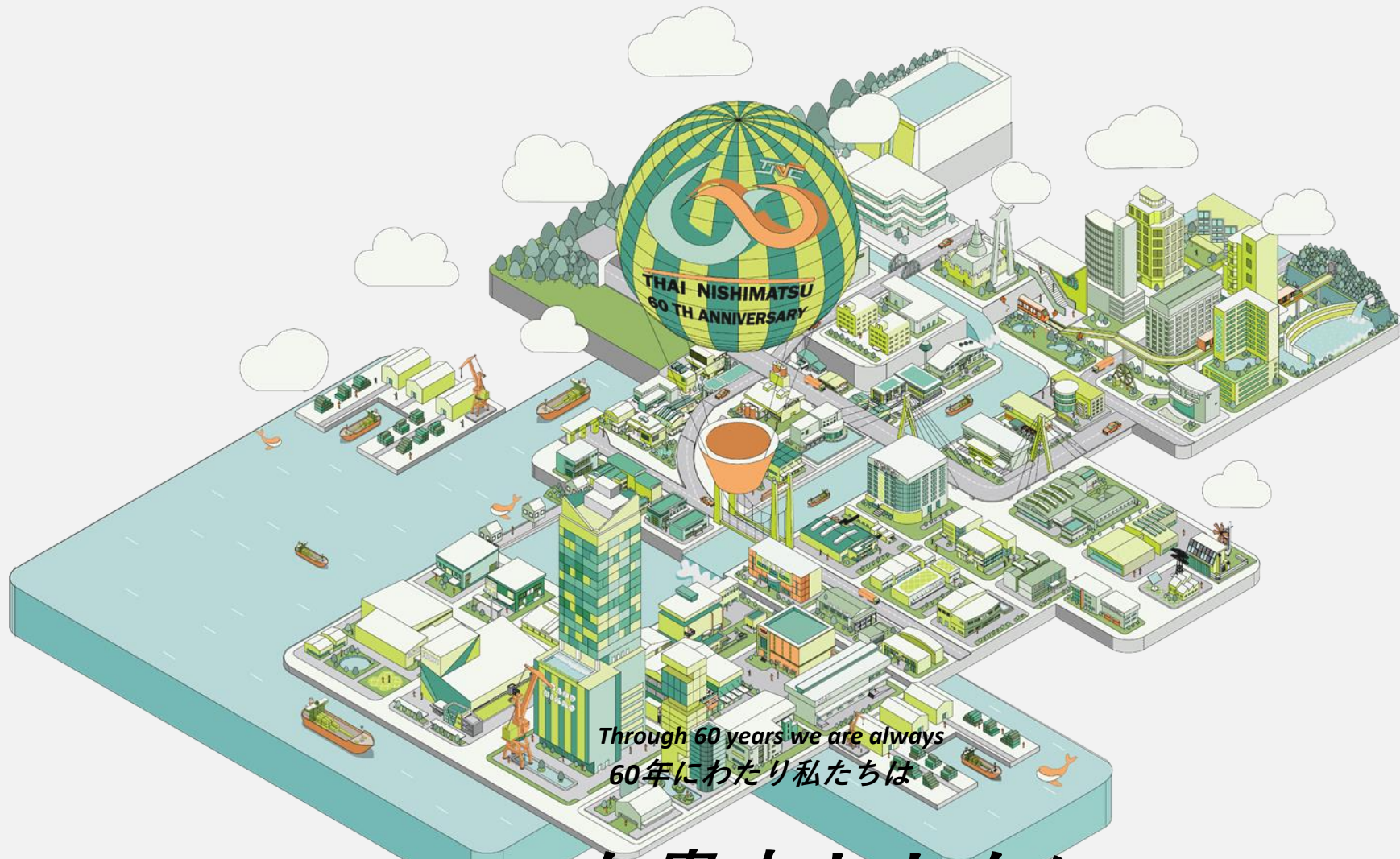
ALUMINIUM ROLLED SHEET FACTORY
GFA : 111,907 m² (Warehouse: 15,093 m²)

LOCATION

AMATA CITY, RAYONG

CONSTRUCTION PERIOD

PHASE 1 53,814 m² : JULY 2012 - JUNE 2013
PHASE 2 10,176 m² : JULY 2013 – MAY 2014
PHASE 3 47,917 m² : MAY 2017 – SEP 2018



Through 60 years we are always
60年にわたり私たちは

“いつも貴方とともに”
On your side, In your life